



RECP #: 752610

RECORDED 5/8/2019 AT 1:07 PM BK# 2620 PG# 1652
Debra K. Lee, CLERK OF LARAMIE COUNTY, WY PAGE 1 OF 1

STATE OF WYOMING CORNER RECORD

(In compliance with the CORNER PERPETUATION AND FILING ACT, Wyoming Statutes, 1997 Section 33-29-140, et. seq., and the Rules and Regulations of the Board of Registrations for Professional Engineers and Professional Land Surveyors)

SOUTH WEST CORNER SECTION 1, T. 18 N., R. 63 W., 6TH P.M., LARAMIE COUNTY, WYOMING

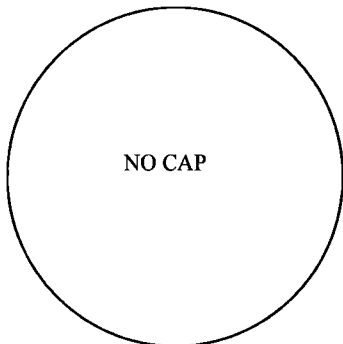
GLO: SET A SANDSTONE 16X12X4 12 IN. DEEP. MARKED WITH 5 NOTCHES ON S. SIDE AND 1 NOTCH ON E. SIDE FOR COR. TO SECS. 1, 2, 11, 22.

FOUND: FOUND REBAR 0.2' ABOVE SURFACE WITH A STEEL POST ON N. SIDE.

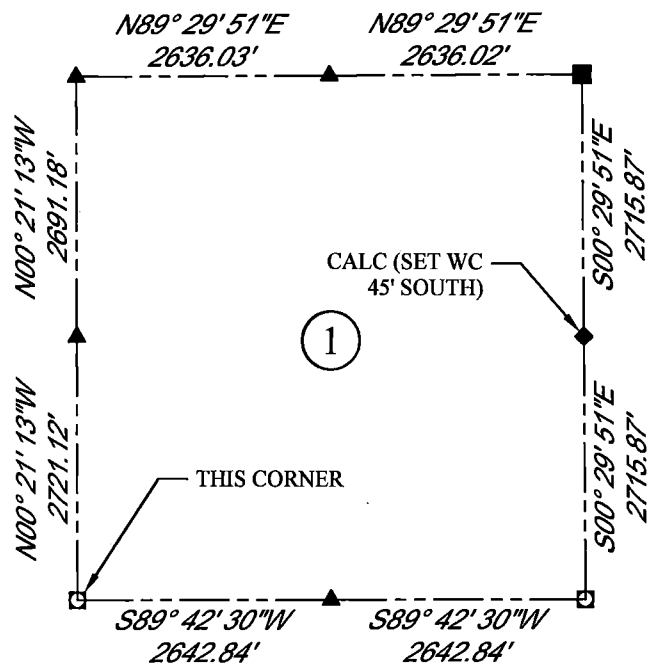


SCALE: NONE
NORTH DETERMINED BY
G.P.S OBSERVATIONS

FOUND REBAR WITH STEEL POST



DATE OF FIELD WORK: 08/20/2018 OFFICE REFERENCE: 746049 ----



LEGEND:

- FOUND BLM CAP
- FOUND USFS CAP
- FOUND STONE
- FOUND PRIVATE MONUMENT
- ◆ CALCULATED POSITION
- ▲ SET MONUMENT (LS10245)
- SECTION LINE

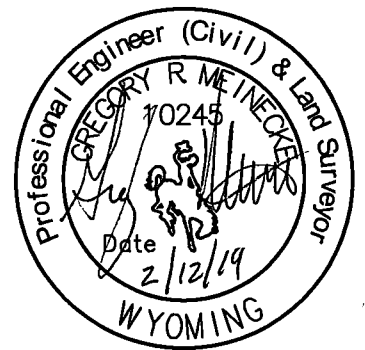
CROSS INDEX DIAGRAM

	1	2	3	4	5	6	7	8	9	10	11	12	13	14	15	16	17	18	19	20	21	22	23	24	25	
A																										
B																										
C			6																							
D				5																						
E					4																					
F						3																				
G							2																			
H																										
I																										
J																										
K																										
L																										
M																										
N																										
O																										
P																										
Q																										
R																										
S																										
T																										
U																										
V																										
W																										
X																										
Y																										
Z																										
	1	2	3	4	5	6	7	8	9	10	11	12	13	14	15	16	17	18	19	20	21	22	23	24	25	

WOOD
2615 AVIATION DRIVE
SHERIDAN, WY 82801
PH: 307-675-6400

wood.

THIS CORNER RECORD WAS
PREPARED BY ME OR UNDER
MY DIRECTION AND
SUPERVISION,
SEAL AND SIGNATURE



CORNER NAME: SOUTH WEST SECTION: 1 T. 18 N., R. 63 W. ; 6TH P.M. CROSS-INDEX # E-21
SBRPELS/PLSW: MARCH 1994; PLSW JANUARY 1998